

Quickship-program

Freight, delivery, and
set up additional



Easy as 1-2-3 Order your *BULL Outdoor Kitchen* today!

STEP #1 Select Your ODK Model & LP or NG Gas Type

POWER Q

30" Outlaw Grill

\$4999



Shown with: Charcoal Matte Tile & Stucco Rock SR-16 Base



LUXURY Q

30" Lonestar Select Grill

\$6699

SUPERIOR Q

30" Angus Grill

\$6599



Shown with: Fawn Polished Tile & Stucco Rock SR-12 Base



BBQ

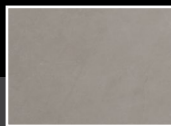
38" Brahma Grill

\$7899

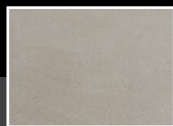
Shown with: Charcoal Polished Tile & Grey Stone Rock Base

STEP #2 Select Your Tile & Base Finish Materials

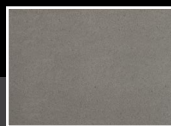
IVORY POLISHED



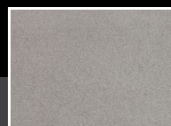
IVORY MATTE



FAWN POLISHED



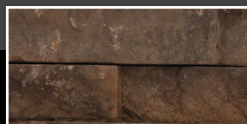
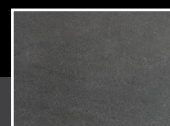
FAWN MATTE



CHARCOAL POLISHED



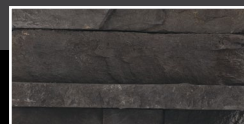
CHARCOAL MATTE



DAKOTA - ROCK



STUCCO ROCK - 12



GREY STONE - ROCK



STUCCO ROCK - 16

STEP #3 Select Your Upgrades - Components & Grill



\$469

Side Burner Stainless Steel
Item# 60008 (LP) - Item# 60009 (NG)



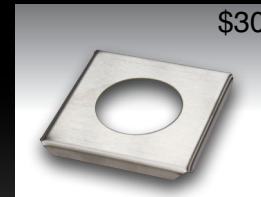
\$829

Door Propane Drawer Combo
Stainless Steel - Item# 65784



\$109

Bottle Opener w/catch
Stainless Steel - Item# 66006



\$30

Umbrella Hole Stainless Steel
Item# 16624



\$829

Door Drawer Combo 30"
Stainless Steel - Item# 25876



\$669

Ice Chest Stainless Steel
Item# 00002



\$869 **\$639**

Angus Grill Head
Item# 47628 LP - Item# 47629 NG
*Upgrade for Power Q & Luxury Q only



Quickship-program

BUILT

BULL STRONG

Easy as 1-2-3 Order your BULL Outdoor Kitchen today!

Three Step Ordering / Design Process:

- Select your ODK Design & Gas Type, LP or NG
- Select your Tile Color & Base Finish
- Select your Upgrades (*Fixed Assortment*)
- QuickShip Program - Ships in 10 days

POWER Q - STANDARD FEATURES

Countertop - 31" x 76.75" | Base - 27.5" x 69.5"

\$4999

- Outlaw Grill Head - Stainless Steel 4-Burner 60,000 BTU's
- Stucco Rock Base - Choice of 2 colors
- Tile Countertop - Choice of 6 colors
- Stainless Steel Refrigerator 4.4 cu. ft. - W/ Frame
- Stainless Steel Double Door
- GFCI Electric Outlet

LUXURY Q - STANDARD FEATURES

Countertop - 29.75" x 90.75" x 65" | Base - 27.5" x 68" x 32"

\$6699

- Lonestar Select Grill Head - Stainless Steel 4-Burner 75,000 BTU's
- Stucco Rock Base - Choice of 2 colors
- Tile Countertop - Choice of 6 colors
- Stainless Steel Refrigerator 4.4 cu. ft. - W/ Frame
- Single Side Burner LP/NG
- Stainless Steel Double Door
- Bottle Opener W/Catch
- Umbrella Hole
- GFCI Electric Outlet

SUPERIOR Q - 30" ANGUS - STANDARD FEATURES

Countertop - 42.75" x 54.75" x 102.25" | Base - 27.5" x 82.5"

\$6599

- Angus BBQ Stainless Steel 4-Burner Grill 75,000 BTU's
- Stucco Rock - Choice of 2 colors
- Tile Countertop - Choice of 6 colors
- Stainless Steel Refrigerator 4.4 cu. ft. - W/ Frame
- Stainless Steel Double Door
- Bottle Opener W/Catch
- Umbrella Hole
- GFCI Electric Outlet

Upgrade to Rock add \$1400

BBQ - 38" BRAHMA - STANDARD FEATURES

Countertop - 42.75" x 54.75" x 108.75" | Base - 27.5" x 82.5"

\$7899

- Brahma Grill Head - Stainless Steel 4-Burner 90,000 BTU's
- Stone Rock Base or Stucco Rock - Choice of 4 colors
- Tile Countertop - Choice of 6 colors
- Stainless Steel Refrigerator 4.4 cu. ft. - W/ Frame
- Single Side Burner LP/NG
- Stainless Steel Double Door
- Bottle Opener W/Catch
- Umbrella Hole
- GFCI Electric Outlet

Freight, delivery, and set up additional



Visit www.BullBBQ.com or contact us at 800-521-2855

The Brand Choice for Commercial and Professional BBQ's

©2020 Bull Outdoor Products, Inc. All Rights Reserved.



* Special Program to BULL Authorized Dealers

